



Office ELEC is an integrated software for projects, quotations, orders, invoicing and monitoring of electric installations projects, aimed to engineering departments and account managers. It allows to automatically figure up then order equipments prepared in every Caneco software. It makes the most of the EDIELEC multi manufacturers price list and electronic catalogue and offers, in option, technical tools (cabinet lay out).

The autonom desk of the electrician

To manage is to see and foresee

See clearly your project:

The documents

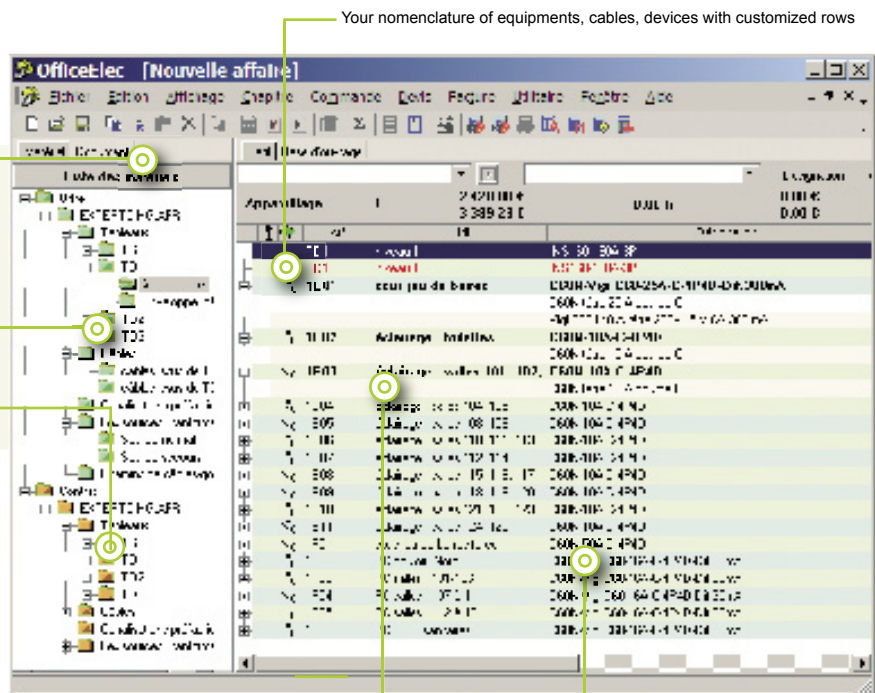
Create and access directly the documents of your project imported from Word, Excel, Caneco...

Forecast

The price quotations and the evolution of the project

Estimate

The cost of the equipments' nomenclatures



Automatically put a price on your Caneco project

...the components and accessories of your equipments

prices and time of installation automatically given

ABB	01/04/2002	
LEGRAND	01/04/2002	TARIF
MERLIN GERIN	01/10/2002	
ARNOULD	01/05/2002	Disjoncteurs d'usage général
BACCO	01/03/2002	Disjoncteurs Modulaires
DELTA DORE	01/07/2001	Inter et inter différentiel modulaire
ERICO	01/05/2002	Minuterie / relais temporisé
FERRAZ	01/01/2000	Télérupteur
HAGER	01/03/2002	Télévariateur-variateur
MOELLER	01/01/2001	Thermostat / régulateur
SIEMENS	01/10/2001	Sonnerie-ronfleur-voyant

Then choose the equipments in a price list and an electronic catalog

Electronic price list EDIELEC:

920 000 electrical and climatic technical components
196 manufacturers

Electronic catalogue EDIELEC and its tools:

Configuration of the Equipment Technical Choice (ETC) to define the references of the most used components.

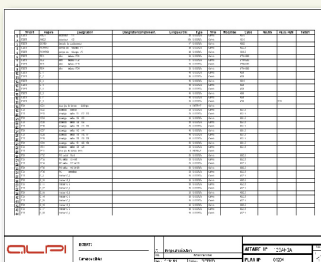
Get more autonomy

Make yourself your own price quotations, project situation, orders to manufacturers

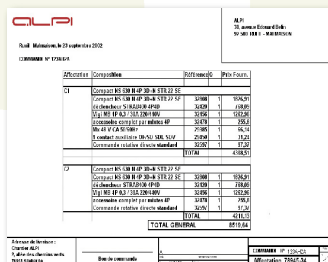
Make yourself basics calculations, diagrams and drawings that don't need the intervention of specialists from design offices

Define yourself quantities and nomenclatures and give all the information needed to the building site.

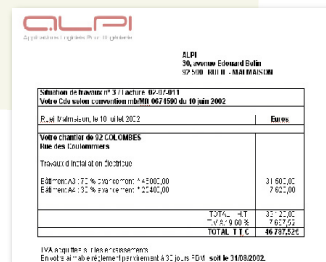
Quotation



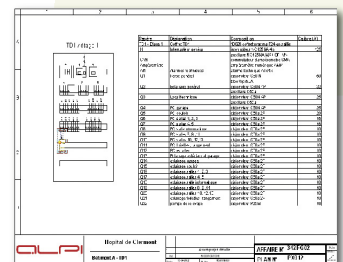
Order



Invoice



Cabinet Set Up



Why Office Elec ?

The efficiency of an electrical contractor relies on his design office and his account managers. Their numerous tasks of conception, choice of the equipment, supply, administration and monitoring of businesses make their work difficult.

Office ELEC brings them a greater technical and management autonomy for their daily projects.

Office ELEC allows as well the company to get rid of all the discontinuity between the design office, the administration and its account managers.

Who is it for?

- ▶ For Design / Engineering departments that are responsible for choosing the equipments and making nomenclatures
- ▶ For Electrical fitters account managers
- ▶ For maintenance managers

Description

Price quotations Management

- ▶ Edition (create, delete, modification) of the quotations in a windows environment
- ▶ Customization of the sales ratio by chapter
- ▶ Automatic calculation for the price of the equipment, cost of labour
- ▶ Invoice edition from the quotation chapters

Equipment Management

- ▶ Equipment nomenclature: equipments definition made of several components thanks to the multi manufacturers price list electronic catalogue EDIELEC.
- ▶ Cut-Copy-Paste functions
- ▶ Additional rows to create nomenclatures for the building site (the ins and outs for the wires nomenclatures, rating and number of poles for the equipment)

Order Management

- ▶ Orders realised by drag & drop from equipments nomenclatures
- ▶ Orders realised by drag & drop from components nomenclatures sorted by manufacturers and / or chapters, and / or equipment
- ▶ Orders confirmation and lock up of the equipments and their components after fulfilment.
- ▶ Creation or access, directly from Office ELEC, to documents made with your usual windows software (Word, Excel,...)
- ▶ Creation of your own documents models from these software: overall models, specific to a business.
- ▶ Creation of information in these documents: clues, comments, date of creation, authors, modifications

Printings and nomenclatures rows customization

Nomenclatures, price quotations Import Export

Optional module, complementary softwares

Electronic technical catalogue EDIELEC

Equipment Technical Choice (ETC) software

Automatic quotation

- ▶ Of a Caneco BT project
- ▶ Of a Caneco Implementation project
- ▶ Caneco Cabinet project
- ▶ Of an equipment list from Excel
- ▶ Of Autocad blocks in DXF or DWG with identification graph of blocks not estimated

Caneco Box's calculation tool

- ▶ Low voltage power line calculation
- ▶ Conversion of unities, engines consumption, lights, capacitor set power

Cabinet lay out

- ▶ Automatic lay out of the equipments inside cabinets
- ▶ Manual modification of the lay out (shifting, reserves insert, rows break, enclosure break...)

Drawings and electric diagrams software Caneco drawings built-in

- ▶ Normalised symbols library (IEC 617), modular cabinets and equipments front panels
- ▶ Customized documents: network single line diagrams, cabinet front panel, A4, A3... cartouche.

Updates, maintenance

Updates through CD-ROM or internet with the AlpiUpdate tool

Hotline by ALPI

Training

You may need a training on Office Elec, up to 2 days according to the trainees level and the version used.

